

Lithium Battery MPPT Solar Charge Controller

Tracer-BP series



The Tracer BP series solar charge controller adopt to the advanced Maximum Power Point Tracking charging methods, it enables the system charging and discharging management to obtain the most radical optimization. Increase the system flexibility, yet lower down the system cost. The controller support a variety of battery, for example sealed, gel, flooded and lithium battery. User can view and modify the working status and parameters. It can be widely used on solar home system, traffic signal, solar street light, solar garden lamp, etc.

Models:

Tracer2606BP / Tracer2610BP	130W/12V 260W/24VDC	10A
Tracer3906BP / Tracer3910BP	195W/12V 390W/24VDC	15A
Tracer5206BP / Tracer5210BP	260W/12V 520W/24VDC	20A
Tracer7810BP	390W/12VDC 780W/24VDC	30A

Features:

- Adopt high quality components of ST,IR and Infineon, make sure product using lifespan
- Wide working environment temperature(-40°C~60°C)
- Apply to lithium battery(LiFePO4/Li-NiCoMn)and battery(Sealed/Gel/Flooded)
- Lithium battery self-activating and low temperature protection function
- Maximum conversion efficiency of 98%
- Advanced Maximum Power Point Tracking (MPPT) technology, with tracking efficiency no less than 99%
- Ultra-fast tracking speed and guaranteed tracking efficiency
- Accurately recognizing and tracking of multiple power points
- PV power limitation function
- Monitoring and setting parameter via Mobile APP, PC Monitor setting software with RS485 communication interface.

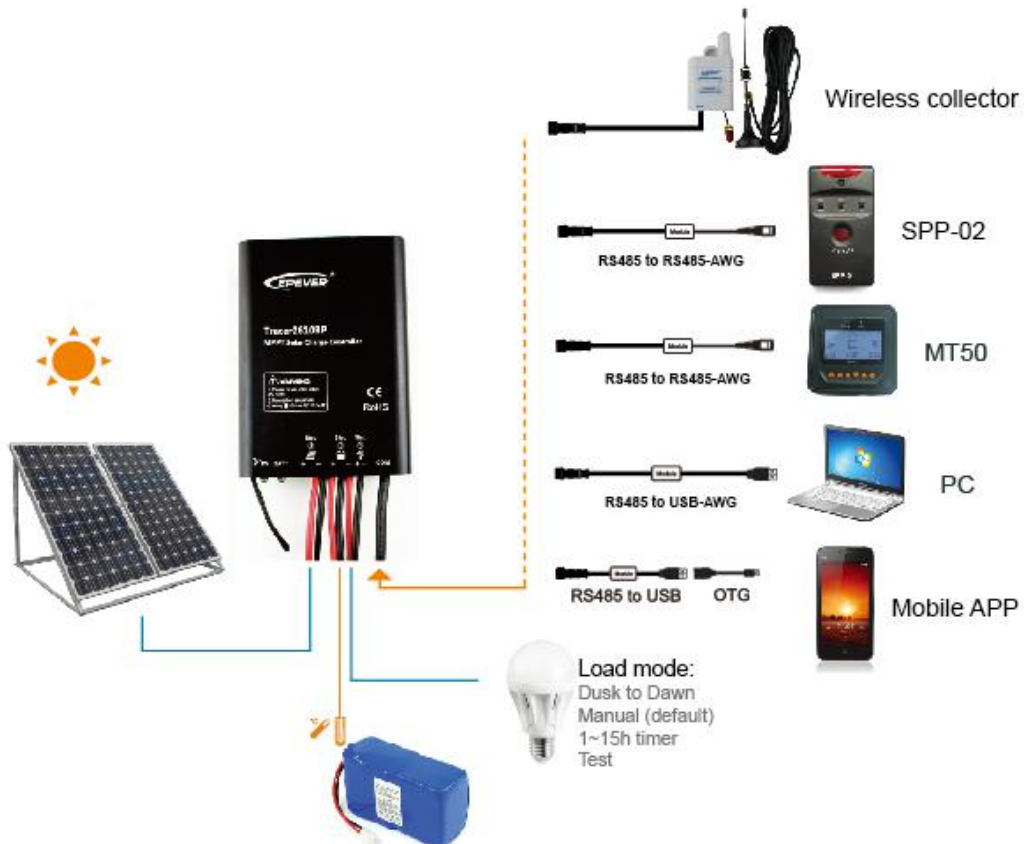
- Use of standard Modbus communication protocol for RS485 bus connections, communication protocol compatibility much better
- Connecting the IOT(Internet of Things) module and Cloud Server monitoring software to realize remote monitoring of the multi-machine system
- The RS485 connector can provide power supply
- Aluminum housing for better cooling
- Real-time energy statistics function
- IP67 waterproof degree
- Long lifespan design, five years warranty

Load working mode:

- Manual Mode
- Light ON/OFF(Default)
- Light ON + Timer
- Real-time Control
- Intelligent Power Mode

Electronic protections:

- PV over current protection
- PV reverse polarity protection
- Battery over voltage protection
- Battery overheating protection
- Load overload protection
- PV short circuit protection
- Battery reverse polarity protection
- Battery over discharge protection
- Lithium battery low temperature protection
- Load Short circuit protection



Optional accessories:

eBox-WL433M-01 Wireless collector



SPP-02 Super Parameter Programmer



**eBox-WIFI-01
WIFI Serial Server**



**eBox-BLE-01
Bluetooth adapter uetooth adapter**



MT50 Remote meter



Tracer3906EPLI-ZSPJ1-V1.10



Fixed Plate (Four)
Overall dimension: 20×18×6mm/Mounting hole size: Φ3.5mm

CC-USB-RS485-150U-22AWG



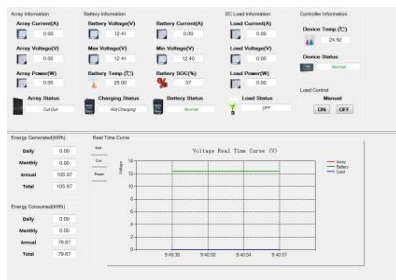
PC communication cable
Length:1.5m

OTG-12CM

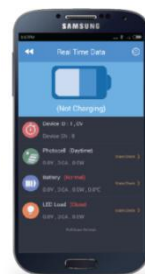


OTG cable
Length:12cm

PC software:



Mobile APP:



* Free download from website for PC software and APP.

Model	Tracer2606BP	Tracer3906BP	Tracer5206BP	Tracer7810BP
	Tracer2610BP	Tracer3910BP	Tracer5210BP	
Nominal system voltage	12/24VDC auto✘			
Rated charge/discharge current	10A	15A	20A	30A
Rated charge power	130W/12V 260W/24V	195W/12V 390W/24V	260W/12V 520W/24V	390W/12V 780W/24V
Max. PV open circuit voltage	Tracer**06BP: 60V at minimum operating environment temperature 46V at 25°C environment temperature Tracer**10BP: 100V at minimum operating environment temperature 92V at 25°C environment temperature			
MPP voltage range	Tracer**06BP: (Battery voltage+2V)~36V Tracer**10BP: (Battery voltage+2V)~72V			
Battery type	Sealed / Gel / Flooded ; LiFePO4 / Li-NiCoMn / User			
Equalize charging voltage	Sealed: 14.6V(12V), 29.2V(24V) / Gel: No / Flooded: 14.8V(12V), 29.6V(24V); Li-battery: No			
Boost charging voltage	Sealed : 14.4V(12V), 28.8V(24V) / Gel: 14.2V(12V), 28.4V(24V) / Flooded: 14.6V(12V), 29.2V(24V) / LiFePO4: 14.6V / Li-NiCoMn: 12.51V / User: 9-34V			
Float charging voltage	Sealed/Gel/Flooded: 13.8V(12V), 27.6V(24V) LiFePO4: 14.4V / Li-NiCoMn: 12.39V / User: 9-34V			
Low voltage reconnect voltage	Sealed/Gel/Flooded: 12.6V(12V), 25.2V(24V) LiFePO4: 12.0V / Li-NiCoMn: 10.8V / User: 9-34V			
Low voltage disconnect voltage	Sealed/Gel/Flooded: 11.1V(12V), 22.2V(24V) LiFePO4: 10.6V / Li-NiCoMn: 9.3V / User: 9-34V			
Self-consumption	≤13mA/12V; ≤11.5mA/24V			
Communication	RS485			
Overall dimension	124×89×30mm m	150x93.5x32.7mm	153.3x105x52.1mm	
Net weight	0.54kg	0.74kg	1.2kg	1.26kg
Enclosure	IP67			
Working environment temperature	-40°C~+60°C			-40°C~+50°C

✘ Lithium battery do not automatic identification system voltage and no temperature compensation coefficient.

* Programmable voltage value by SPP-02 , RC-02 and APP.

KF SOLAR TECH GROUP CORP.

Add: 168 SOFTWARE AVENUE, YUHUATAI
DISCTRICK, NANJING, JIANGSU, CHINA

Tel: +86 25 66018007 / +86 13951630217

E-mail: info@kfsolar.com

Website: www.kfsolar.com

ISO9001:2008 ISO14001:2004